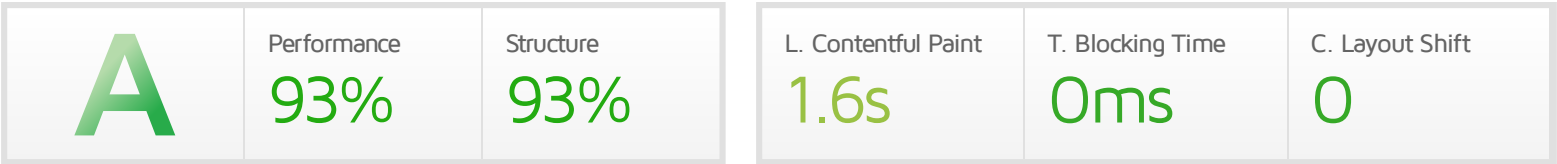




Performance Report for: <https://plxmyhost.fr/>

Report generated: Tue, Nov 15, 2022 10:44 AM -0800
 Test Server Location: Vancouver, Canada
 Using: Chrome (Desktop) 103.0.5060.134, Lighthouse 9.6.4



Top Issues

IMPACT	AUDIT	
Med-Low	Serve static assets with an efficient cache policy	Potential savings of 246KB
Med-Low	Avoid document.write()	1 instance found
Low	Eliminate render-blocking resources <small>FCP LCP</small>	Potential savings of 9ms
Low	Avoid enormous network payloads <small>LCP</small>	Total size was 374KB
Low	Ensure text remains visible during webfont load <small>FCP LCP</small>	1 font found

Page Details



Total Page Size - 374KB



Total Page Requests - 36



HTML JS CSS IMG Video Font Other

How does this affect me?

Today's web user expects a fast and seamless website experience. Delivering that fast experience can result in increased visits, conversions and overall happiness.

As if you didn't need more incentive, **Google has announced that they are using page speed in their ranking algorithm.**

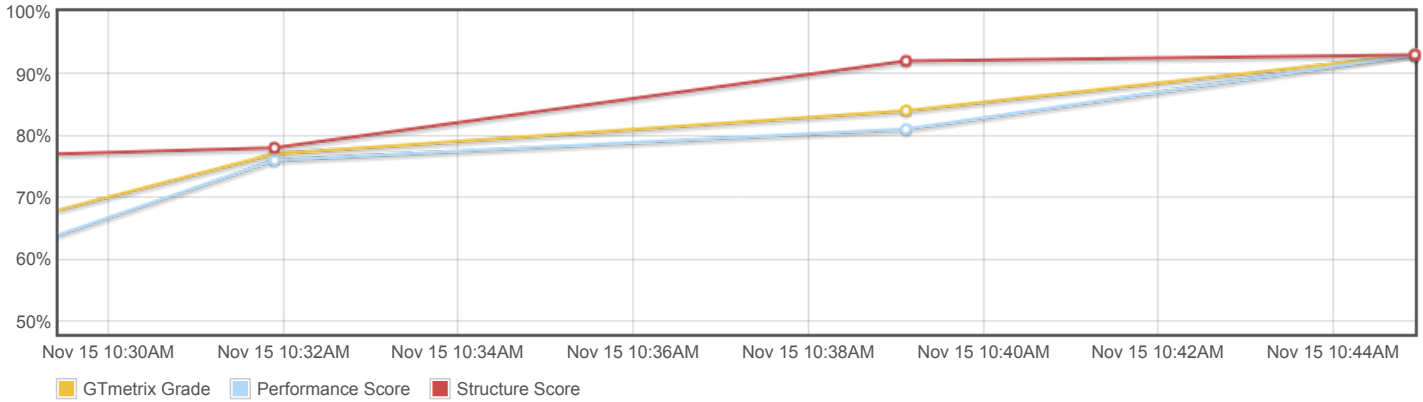
About GTmetrix



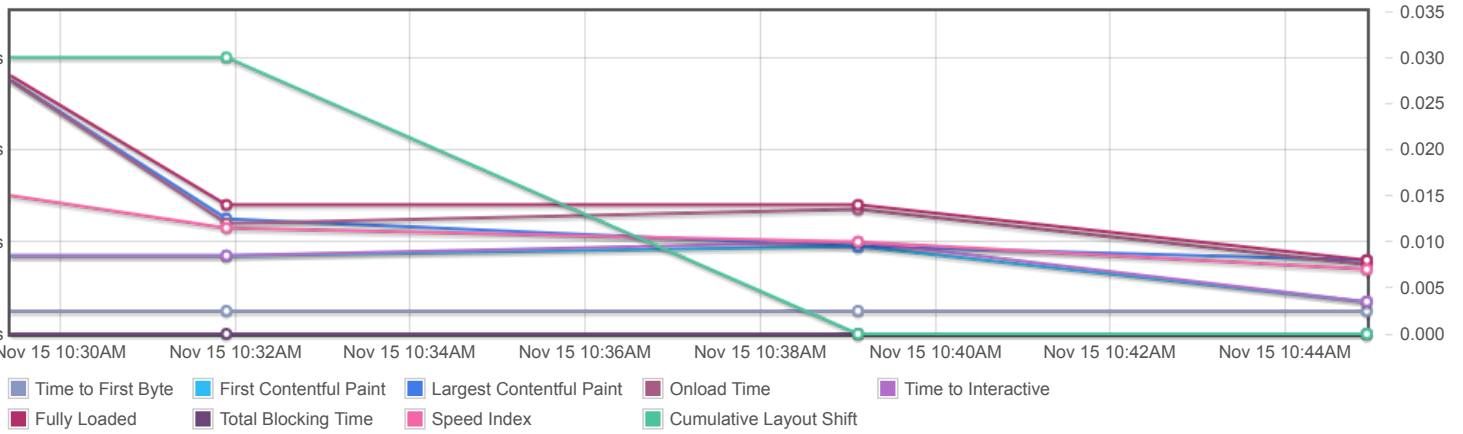
GTmetrix is developed by the good folks at **Carbon60**, a Canadian hosting company with over 26 years experience in web technology.

<https://carbon60.com/>

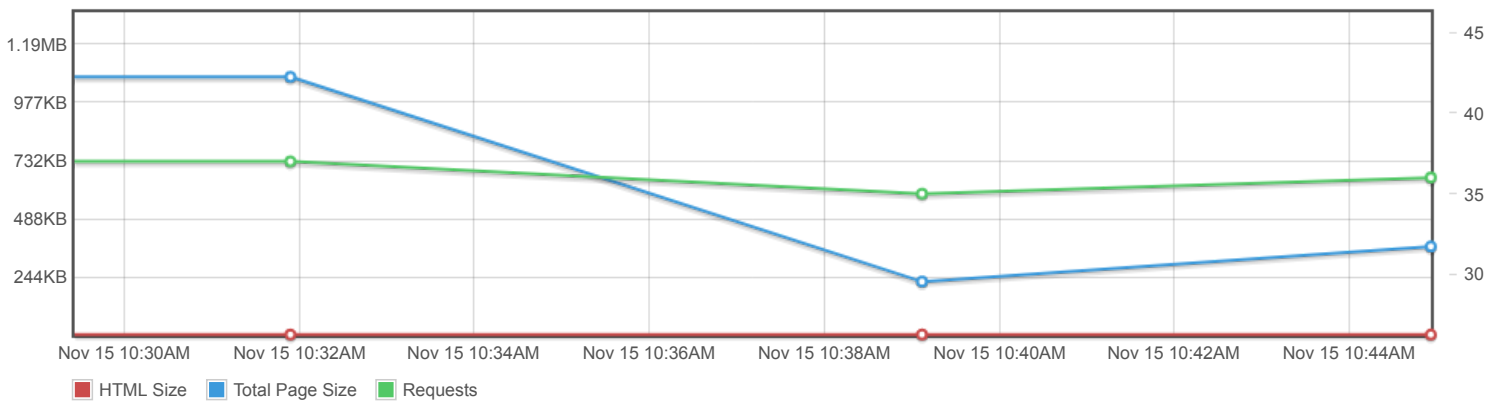
Page scores



Page metrics

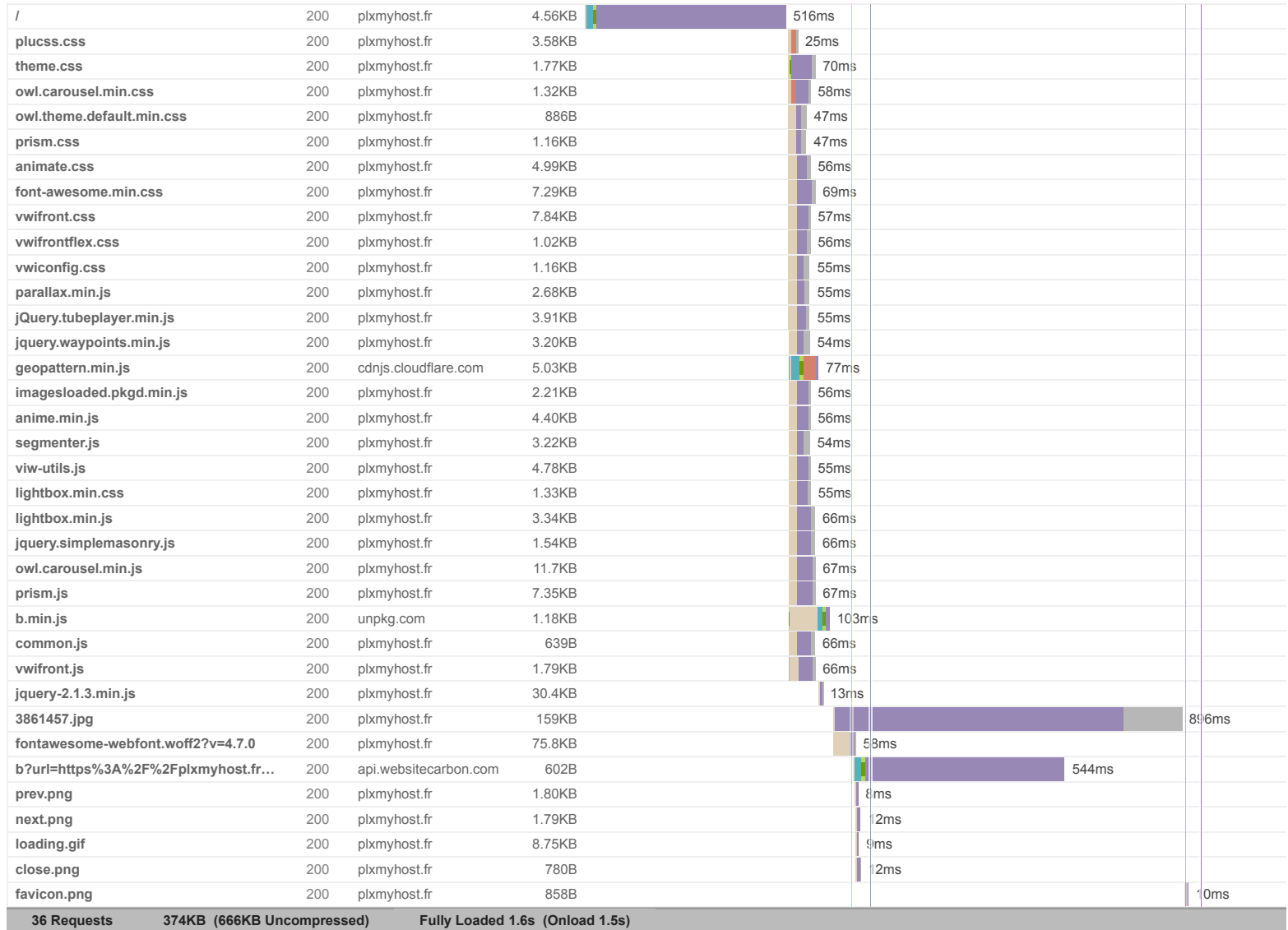


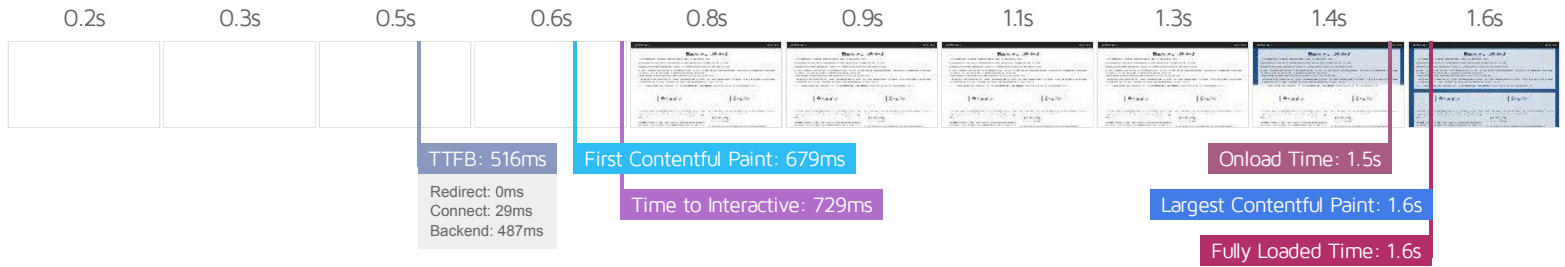
Page sizes and request counts



The waterfall chart displays the loading behaviour of your site in your selected browser. It can be used to discover simple issues such as 404's or more complex issues such as external resources blocking page rendering.

Accueil - plxMyHost.fr





Performance Metrics

<p>First Contentful Paint</p> <p>How quickly content like text or images are painted onto your page. A good user experience is 0.9s or less.</p>	<p>Good - Nothing to do here</p> <p>679ms</p>	<p>Time to Interactive</p> <p>How long it takes for your page to become fully interactive. A good user experience is 2.5s or less.</p>	<p>Good - Nothing to do here</p> <p>729ms</p>
<p>Speed Index</p> <p>How quickly the contents of your page are visibly populated. A good user experience is 1.3s or less.</p>	<p>OK, but consider improvement</p> <p>1.4s</p>	<p>Total Blocking Time</p> <p>How much time is blocked by scripts during your page loading process. A good user experience is 150ms or less.</p>	<p>Good - Nothing to do here</p> <p>0ms</p>
<p>Largest Contentful Paint</p> <p>How long it takes for the largest element of content (e.g. a hero image) to be painted on your page. A good user experience is 1.2s or less.</p>	<p>OK, but consider improvement</p> <p>1.6s</p>	<p>Cumulative Layout Shift</p> <p>How much your page's layout shifts as it loads. A good user experience is a score of 0.1 or less.</p>	<p>Good - Nothing to do here</p> <p>0</p>

Browser Timings

Redirect	0ms	Connect	29ms	Backend	487ms
TTFB	516ms	First Paint	679ms	DOM Int.	688ms
DOM Loaded	729ms	Onload	1.5s	Fully Loaded	1.6s

IMPACT	AUDIT	
Med-Low	Serve static assets with an efficient cache policy	Potential savings of 246KB
Med-Low	Avoid document.write()	1 instance found
Low	Eliminate render-blocking resources FCP LCP	Potential savings of 9ms
Low	Avoid enormous network payloads LCP	Total size was 374KB
Low	Ensure text remains visible during webfont load FCP LCP	1 font found
Low	Reduce JavaScript execution time TBT	13ms spent executing JavaScript
Low	Serve images in next-gen formats	Potential savings of 87.9KB
Low	Reduce initial server response time FCP LCP	Root document took 486ms
Low	Avoid chaining critical requests FCP LCP	26 chains found
N/A	Avoid an excessive DOM size TBT	168 elements
N/A	Largest Contentful Paint element LCP	1 element found
N/A	Avoid large layout shifts CLS	2 elements found
N/A	Minimize main-thread work TBT	Main-thread busy for 199ms
N/A	Reduce the impact of third-party code TBT	Total size was 6.95KB
N/A	User Timing marks and measures	